

# Release Notes

## MicrOpay Version 9.4

### Contents

Introduction.....1

What's in the MicrOpay Evo 9.4 release? .....3

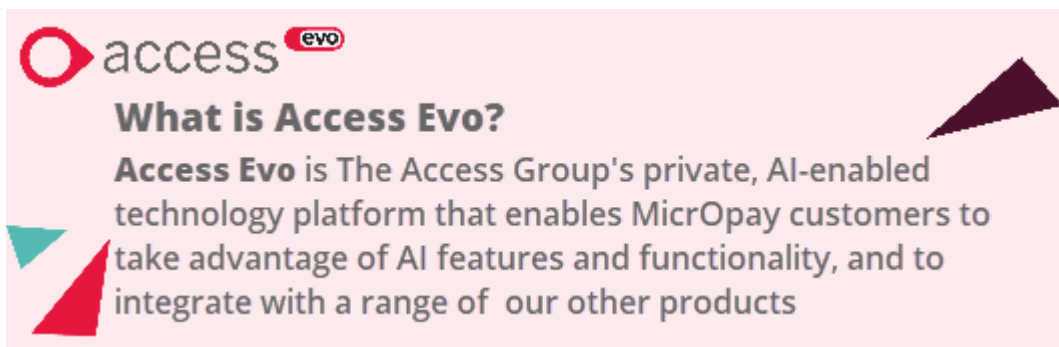
After you upgrade .....13

## Introduction

### MicrOpay Evo

MicrOpay Evo version 9.4 introduces *Access MicrOpay Evo*. Access MicrOpay Evo represents a significant upgrade to existing MicrOpay functionality, by allowing customers to take advantage of the extended capabilities offered by Access Evo. On upgrade to 9.4:

- *Access MicrOpay* is renamed *Access MicrOpay Evo*
- The product logo is updated.
- A dedicated Access **Evo** button is available in MicrOpay.
- The MicrOpay Evo Data Loader is provided with MicrOpay upgrade file.



Visit our website to learn more about [Access Evo](#).

Other highlights of this release include:






- New Zealand tax changes for the *2025/2026 Financial Year* (see page 8).
- New features to enable integration with *Access EarlyPay* (see page 5).
- Changes to *employee Annualised Salary options* (see page 10) in preparation for a new compliance solution.

For more information about these and other changes and fixes, refer to *What's in this MicrOpay Evo release?* (see page 3)

Refer to *After you upgrade* (see page 13) to check the MicrOpay Evo software and database version numbers after upgrade.

## MicrOpay ESP - End of Life

As MicrOpay ESP customers were notified by email in September 2024, MicrOpay ESP will be discontinued from 31 March 2025. From that date, there will be no further software updates, patches or technical support provided.

Key	
 ALL	The item applies to all country payroll databases.
 AU	The item applies to Australian payroll databases.
 NZ	The item applies to New Zealand payroll databases.
 OTH	The item applies to Other country payroll databases.
 STP 2	The item applies to a change for STP2. STP2 changes affect Australian payroll only.

### For our Payroll Online customers

Please note that installation and upgrade of MicrOpay Evo are managed as part of our service to you. You can disregard any comments or instructions that refer to downloading and installing software upgrades.



Before updating your, both the **Payroll** and the **Common** database **must** be backed up. More information about database backup is available in the Knowledge Base article [How do I Backup and Restore?](#)

# What's in the MicrOpay Evo 9.4 release?

## ALL Access MicrOpay Evo

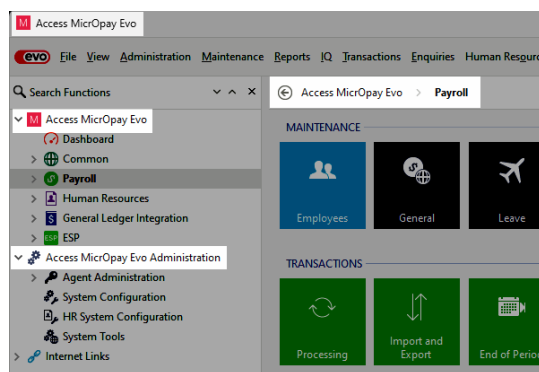
- **Access MicrOpay renamed to Access MicrOpay Evo**

On upgrade to 9.4, MicrOpay will be renamed to *Access MicrOpay Evo*. This change is reflected throughout the system, e.g:

- Updated product logo on the sign in window and splash screen:

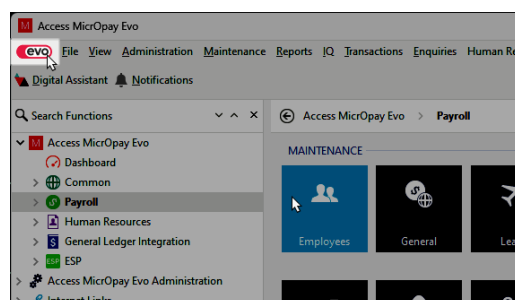


- In the title bar, System Tree and breadcrumb navigation:

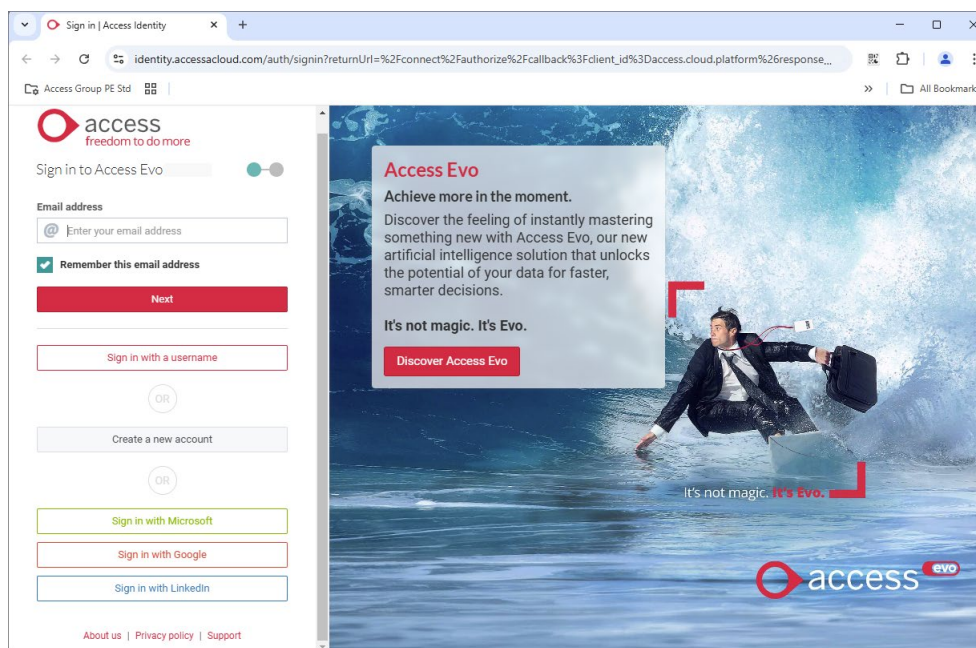


- **Access Evo button**

A new **Evo** button is added to the MicrOpay Evo menu bar.



The **Evo** button opens Access Evo, where you can select and use your other Access products and services, Evo Feed and Spaces.



### **Access MicrOpay Evo Data Loader**

Access MicrOpay Evo utilises a Data Loader to surface payroll data, making it available to other Access Evo products. From version 9.4. we will provide a MicrOpay upgrade zip file that includes the latest version of the Data Loader Setup (in the *Access Evo SQL Data Loader* sub folder).

If you are an **On-premise (desktop) customer**, you don't need to install the Data Loader to upgrade MicrOpay to version 9.4. Follow your regular upgrade process and then install the Data Loader when you are ready to connect MicrOpay Evo to other Access Evo products.

Refer to the following Knowledgebase articles for information about:

- Connecting MicrOpay Evo to Access Evo  
[Access MicrOpay Evo: Getting Started](#)
- Installing the MicrOpay Evo Data Loader.  
[Access MicrOpay Evo Download and install MicrOpay Evo Data Loader](#)



## Access EarlyPay Integration

### What is Access EarlyPay?

Access EarlyPay allows eligible employees to draw down on their current earnings before pay day.

EarlyPay uses pay information from MicrOpay Evo to estimate employees' accrued gross earnings for hours they have already worked in the pay period. Employees can request an on-demand payment, based on that amount, using the EarlyPay mobile app. When pays are processed, the on-demand amount and transaction fee, if applicable, are deducted from the employee's net pay.



Visit our website to learn more about [Access EarlyPay](#).

- **New EarlyPay options and fields included in MicrOpay Evo version 9.4**

On upgrade to 9.4, a number of new options and fields related to EarlyPay are displayed in MicrOpay Evo. Please note that these options are disabled until MicrOpay Evo is enabled for integration with EarlyPay. Some will display a warning message when selected.

#### ***In the Employee Record***

A new **EarlyPay** field, with radio button options **Yes**, **No** and **Suspend**, is added to employee Pay Details.

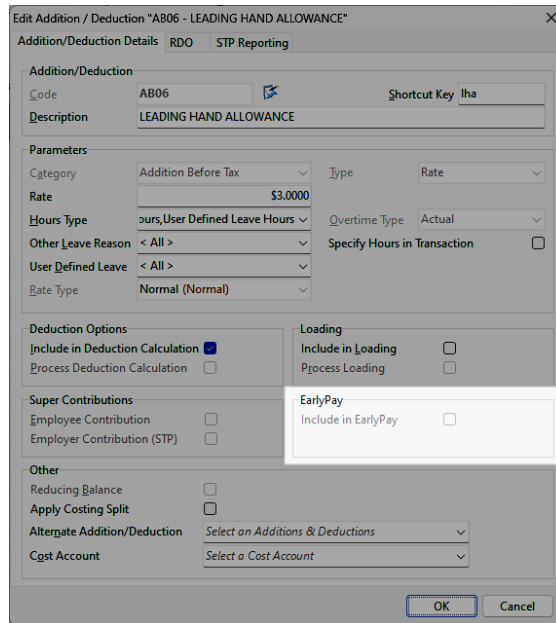
The screenshot shows the 'Edit Employee' form for 'N23 - MCINTYRE CONNOR'. The 'Pay Details' section is expanded, showing the following fields:

- Payroll Company: MPA/SALES (MicrOpay Sales Pty Ltd)
- Location: GLADESVILLE
- Pay Frequency: F01 (Fortnightly)
- Payment Method: Transfer EFT
- Auto Pay:  Yes  No  Suspend
- EarlyPay:  Yes  No  Suspend
- Employment Type: FP - Full-Time Permanent
- Job Classification: IT OFFICER
- Service Hours to Date: 4,355.20

Below the 'Pay Details' section, the 'Leave' section is visible, showing 'Contract Hours' as 'FT38 (7 60 HRS/DAY for 5 DAYS/WEEK) (7.6)'. The 'Workers Compensation' section is partially visible at the bottom.

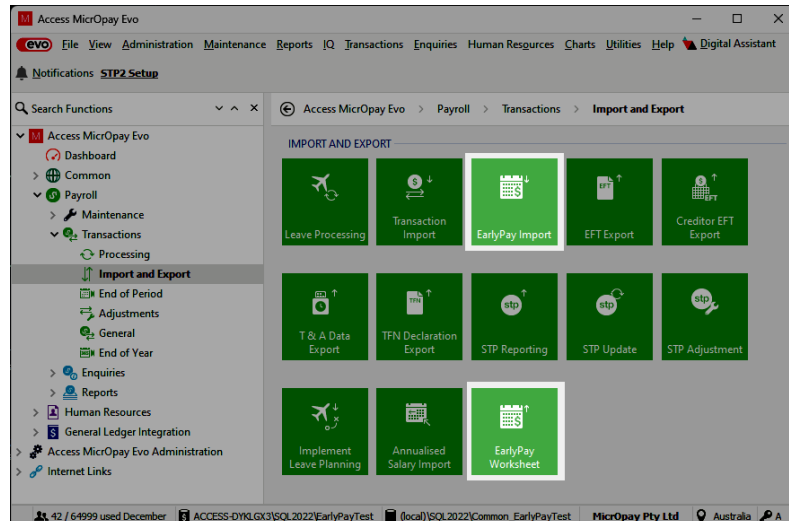
## In Additions and Deductions maintenance

An EarlyPay section, that includes an **Include in EarlyPay** checkbox, is added to Additions and Deductions.

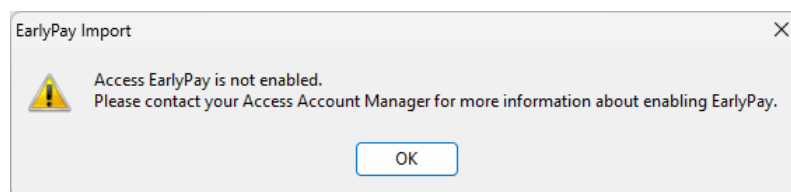


## In Transactions > Import and Export

Two new tiles, *EarlyPay Import* and *EarlyPay Worksheet* are added to the *Import and Export* work area.

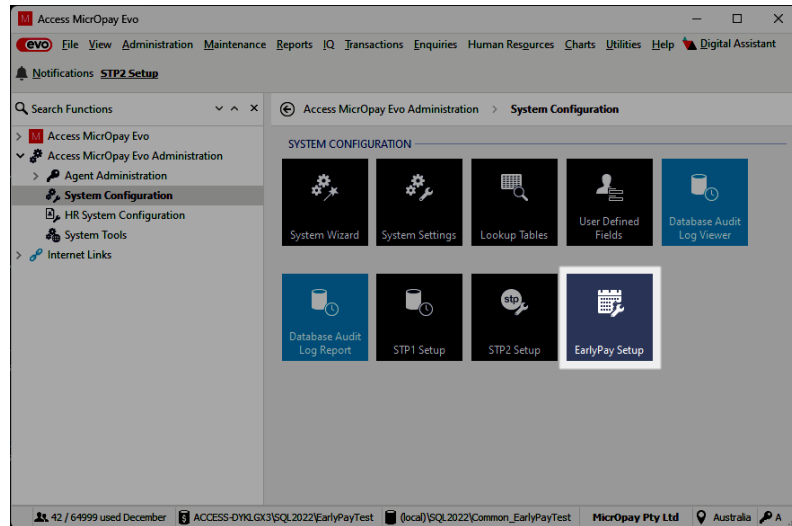


If either tile is selected before EarlyPay is enabled, a message similar to the following is displayed:

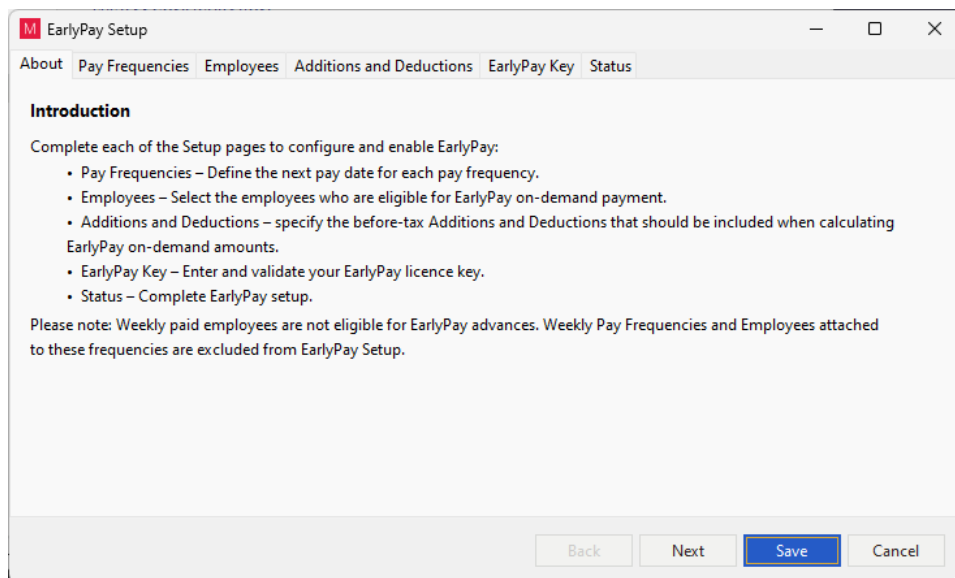


## In MicrOpay Evo Administration > System Configuration

A new tile, *EarlyPay Setup*, is added to the System Configuration work area.



Clicking this tile opens the EarlyPay Setup wizard. The wizard is used to update maintenance records and employees, enter a product key and enable MicrOpay Evo to integrate with Access EarlyPay.





## New Zealand Tax Changes 2025/2026



Please note that the listed tax changes are installed on upgrade to MicrOpay 9.4 but do not take effect until Change Tax Year is run to roll the payroll database over into the 2025/2026 tax year.

This release includes changes to the ACC Earnings Levy, lump sum and ESCT rates and thresholds for the 2025/2026 financial year. After the tax year is changed in a 9.4 database, updated ACC and lump sum tax values can be viewed in **Payroll > Maintenance > Tax > Tax Parameters**.

From 1 April 2025:

### ACC Earnings Levy

- The **Annual Levy Threshold** increases from \$142 283 to **\$152 790**.
- The **Fixed Amount** increases from \$2276.52 to **\$2 551.59**.
- The **Levy Rate** (per \$100 of liable earnings up to \$152 790 annual income) increases from \$1.60 to **\$1.67**.

### Lump Sum Income threshold changes

Lump sum income thresholds for 2025/2026	
Tax Threshold	Tax Rate
\$0 - \$15 600	10.5%
\$15 601 - \$53 500	17.5%
\$53 501 - \$78 100	30%
\$78 101 - \$180 000	33%
\$180 001 and above	39%

### ESCT threshold changes

**ESCT Salary Threshold** and **ESCT Rate** are displayed per employee, in super funds defined for the employee in their *Superannuation Details*.

ESCT Rates and thresholds for 2025/2026	
Tax Threshold	Tax Rate
\$0 - \$18 720	10.5%
\$18 721 - \$64 200	17.5%
\$64 201 - \$93 720	30%



ESCT Rates and thresholds for 2025/2026	
\$93 721 - \$216 000	33%
\$216 001 and above	39%

Please note this release also includes a change to tax calculation on extra pay processed in a New Zealand termination pay, effective from 1 April. Refer to the separate item in Transactions and Processing for more information.

## Transactions and Processing



- **Tax calculation for extra pay on termination has changed**

In line with requirements by the New Zealand IRD, effective from 1 April 2025, the annualised grossed-up value (annualised amount) is now based on the terminated employee's PAYE income for their last two paid pay periods prior to the extra pay being paid.

- Tax on extra pay (lump sum) at termination is calculated on the employee's marginal rate, based on the annualised amount plus the amount of the extra pay. This combined figure is displayed in the **Annual Earnings** field in the Termination Transaction.
- Previously, the annualised amount was based on the employee's PAYE income received over the last four weeks. Please note this method will continue to be used for tax calculation of extra pay that is not related to or paid at termination.



- **Pay Component costing issue corrected**

When pay components that do not have an associated cost account are processed, component values are now costed to the employee's default cost account. This corrects an issue that could cause these components to be costed incorrectly.

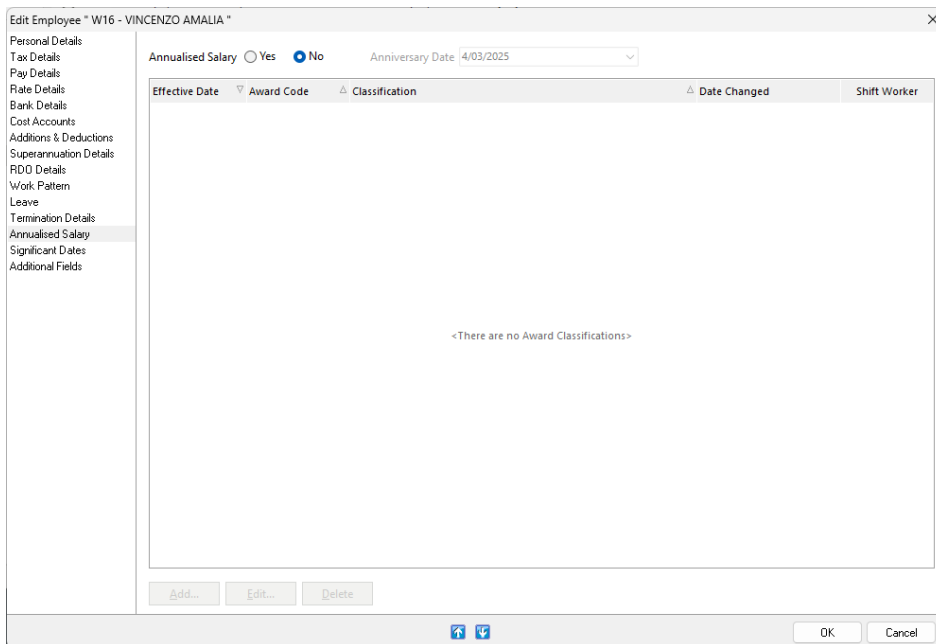
# Employee Maintenance



- **Annualised Salary options have changed**

In preparation for our new compliance solution, we've made some changes to the Annualised Salary fields in the employee record.

- Previously, the **Annualised Salary** and **Anniversary Date** fields were displayed in the *Pay Details* window.
- After upgrade to MicrOpay 9.4, the fields are moved to a new, Annualised Salary window that is added to the employee record.
- As well as the Annualised Salary and Anniversary Date fields, the new window includes a grid that allows you to Add, Edit or Delete Award and Classification details for the employee, which will be used by our new solution.



Please note that:



- On upgrade, the Annualised Salary settings for each employee are retained, e.g. if Annualised Salary was set to **Yes** in employee Pay Details before upgrade, Yes will still be selected in the new window.
- If you currently import employee data from AES, you will be able to continue to do this after upgrade.
- Clicking **Add** opens an Award Classification window, which allows you to select an Award and Classification. This feature is added in preparation for our new Award Compliance solution. While you can select an Award details for an employee, this information is not currently used for Annualised Salary processing

## System, Database and Setup

ALL

### Spelling of Vietnam corrected in Country lists

Spelling of Vietnam corrected in payroll database table \_RtblCountry and common database table (HR) \_hrtblListItem. The corrected spelling is reflected in fields that include dropdown lists of Country names.

## Reports

ALL

- **Issue causing Additions/Deductions to be excluded from Costing Report addressed**

An issue that could cause Additions and Deductions to be excluded from the Costing Report is corrected in this release. This could happen when the Addition or Deduction was set up to cost split, but the split was suppressed when the Addition or Deduction was processed, e.g. because the Addition or Deduction was processed in a termination transaction.

## Superannuation

AU

- **Copied SAFF file layout can now be edited**

It's now possible to edit a super file layout that is based on a copy of the Superannuation Alternative File Format (SAFF). To create an editable copy, right-click on an existing file layout that uses SAFF then select **Copy** from the pop up menu. In the copied version, the **Add** and **Remove** buttons are enabled in the **Header** and **Detail** tabs. Use these buttons to move fields between the Source and Destination field lists on these tabs.



Please note that:

- The copied version can only be edited when first created. Saving the layout locks the format.
- Because the copied version is based on the SAFF:
  - No Total tab is displayed
  - In the **File Details** tab, the **Append** option is set to *One Header for all Funds (No Totals)* and cannot be changed.

### **Blank field outputs in super file corrected**

User defined fields that have a data type other than String, e.g. Lookup, that are used in Super File Layouts are now output correctly when the super file is produced. Previously these fields appeared to be blank in the file output.

## After you upgrade

### For our Payroll Online customers

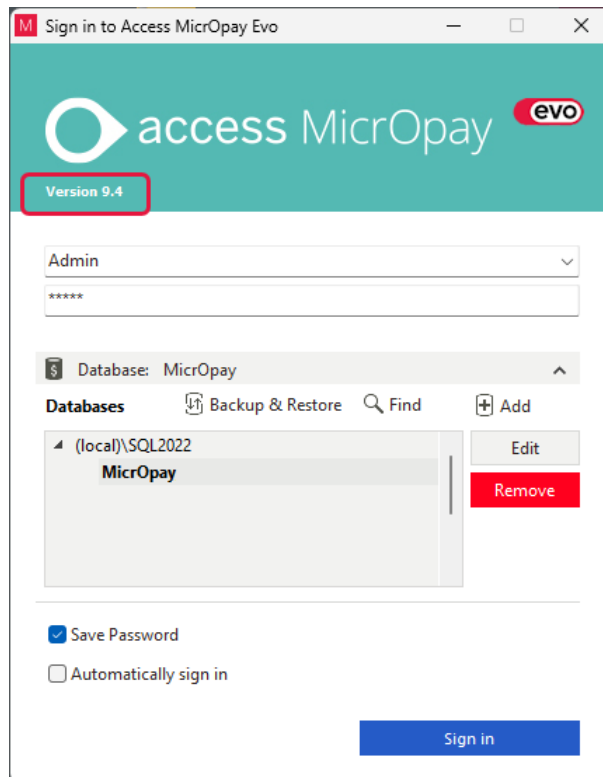
Please note that upgrade of MicrOpay Evo is managed as part of our service to you. You can disregard any comments or instructions that refer to downloading and installing software upgrades.

After the upgrade is installed, you should check that the correct software and database versions are displayed. If the latest version numbers are not displayed, MicrOpay Evo may not have been successfully upgraded.

### To check the MicrOpay Evo software version

In the sign in window:

- After the upgrade is installed the version number displayed should be **9.4**.
- The product logo displayed in the sign in window changes from *Access MicrOpay* to *Access MicrOpay Evo*.

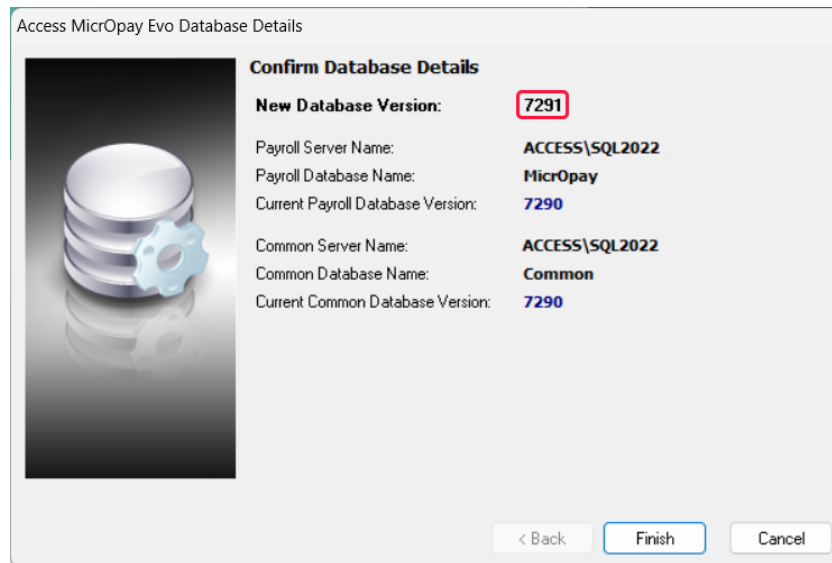


After you have signed in, you can check the version number by going to **Help > About**.

### To check the MicrOpay Evo database version

Your new database version number after the upgrade should be **7291**.

The first time you log in to MicrOpay Evo after installing the upgrade, the payroll and common databases will be updated. You can check the new database version from the Confirm Database Details window.



Ensure you click **Finish** to proceed with the database update.

### ***MicrOpay ESP version***

As MicrOpay ESP is discontinued from 31 March 2025, upgrade and version information will no longer be included with MicrOpay release notes.