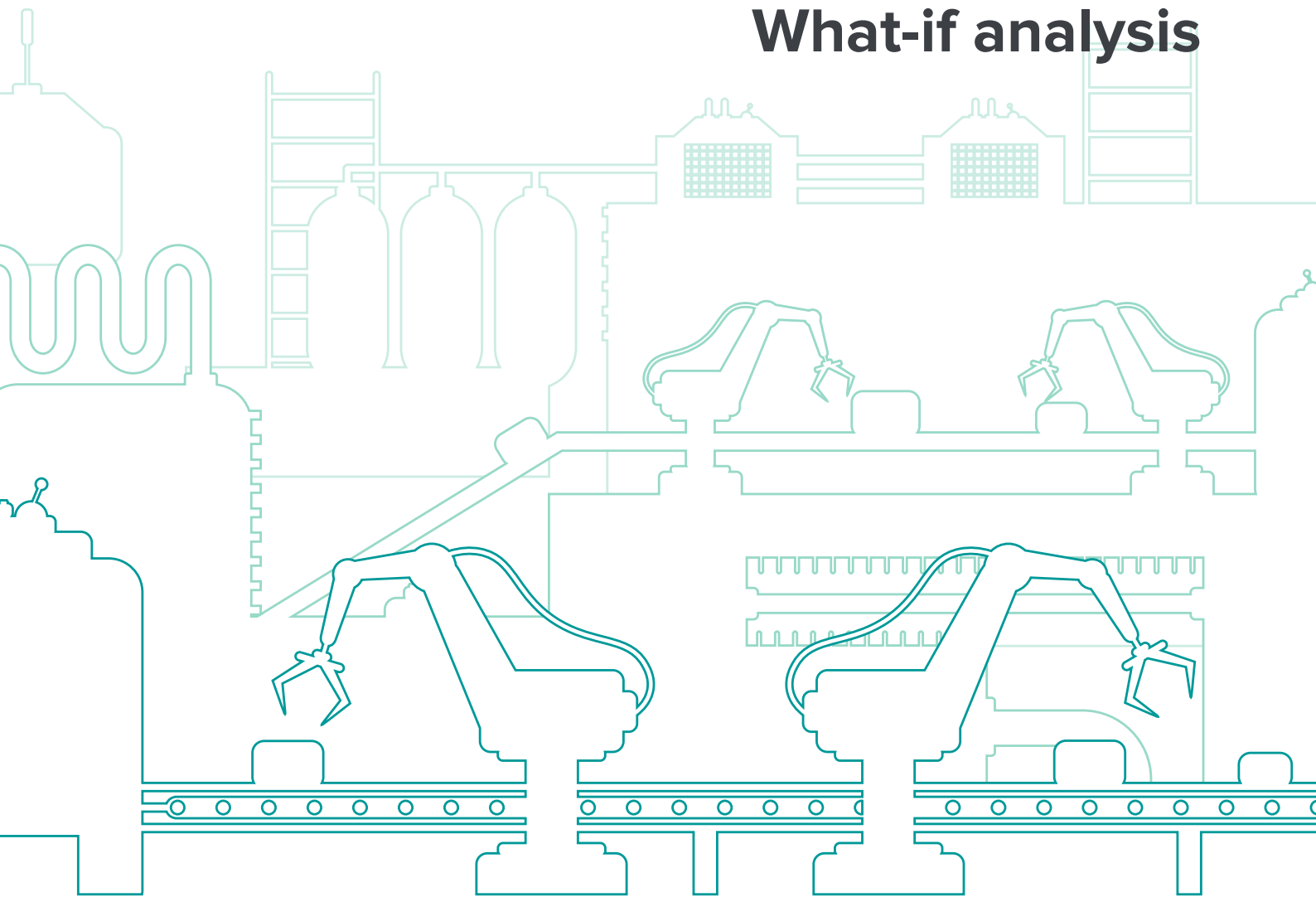


# Access Orchestrate

Production Planning  
and Scheduling  
Software

**Day-to-day scheduling**  
**Capacity planning**  
**What-if analysis**



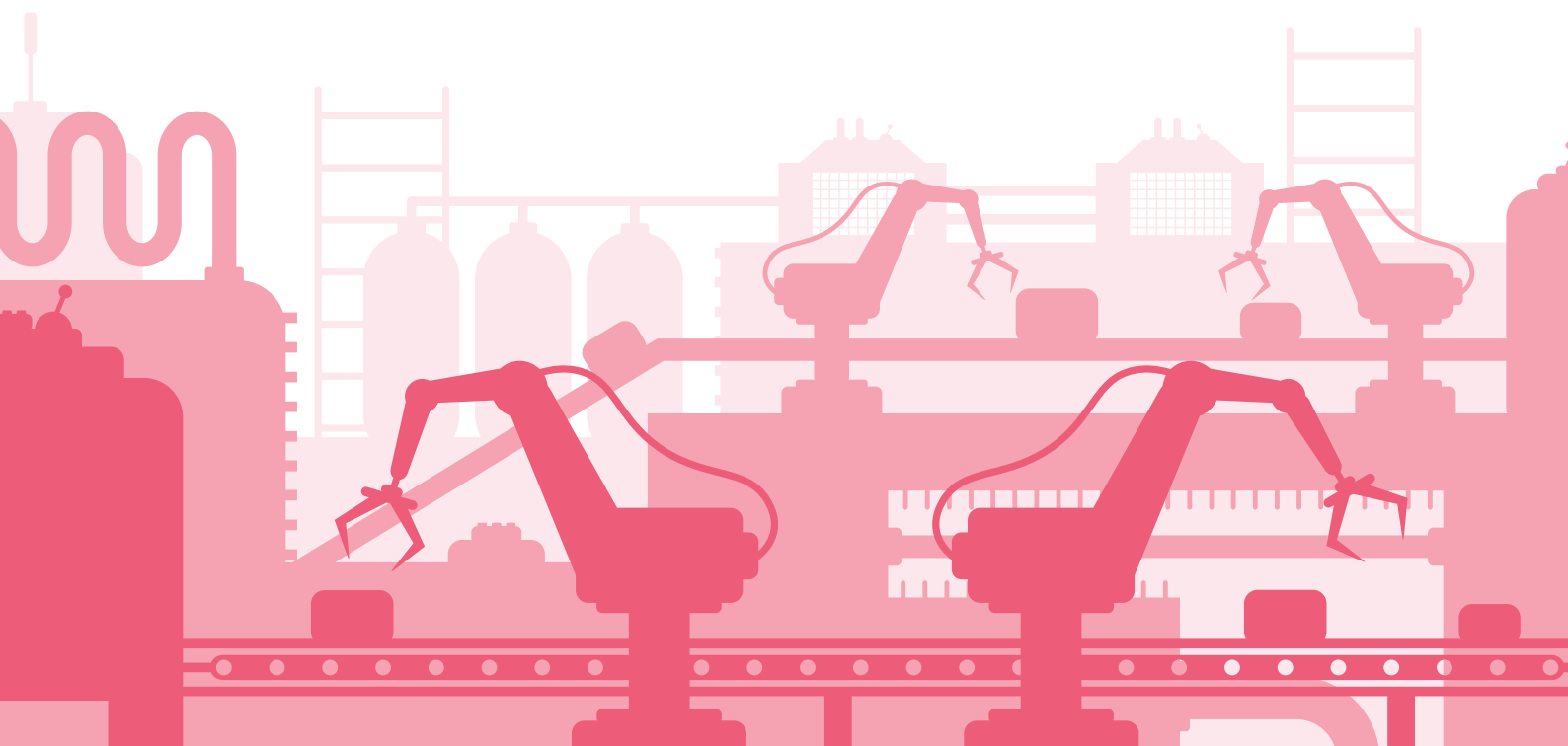
Access Orchestrate is now brought together through Access Workspace, bringing a new view of your business performance and data, including communication and collaboration tools that increase efficiency and productivity to inform quicker, more effective decision making.

Stand-alone, integrated with your current ERP system or part of Access ERP suite, Access Orchestrate optimises your production planning by increasing capacity, efficiency and accuracy.

Production planners and engineers no longer need to rely on complex spreadsheets, whiteboards and paper-based systems for critical path planning.

In a constantly changing production environment, Access Orchestrate shows you a clear way forward no matter what is happening.

Urgent sales need to be prioritised and fulfilled? Stock hasn't arrived? Stock is left over and needs to be used? A job has taken more or less time than expected? The list of variables is endless – but Access Orchestrate always reveals the best response with your available resources.



# Everything you need out of the box

## **Day to day scheduling**

Intuitive Drag and Drop Gantt chart puts planners in control and allows changes to schedules to be made easily and quickly.

## **'What-if?' analysis**

Quickly and accurately test different scenarios and answer the 'what-if?' questions.

## **Increased visibility and accuracy**

All the information you need in front of you in comprehensive, easy to read and accurate management reports. No more guesswork.

## **Stand-alone or integrated with existing ERP**

We understand each business has different requirements, so we've built Orchestrate to accommodate an array of systems. We have a standard methodology for integrating with any existing ERP, MES, or QA system. Orchestrate is designed from the outset as a planning and scheduling system. It is not reliant on an ERP and is often used independently of any other software as a fully stand alone system.

## **Capacity planning**

Conduct detailed analysis of capacity long before full production begins, highlighting areas where equipment will be over- or under-utilised

## **Real-time management insight**

Identify bottlenecks based on accurate data and report on problems areas with heatmaps.

## **On premise or Cloud**

Choose the hosting option that suits your business requirements. If you pick our Access Alto cloud-based hosting solution running VMware, you can rest assured your installation of Access Orchestrate will always be available with a 99.9% uptime SLA guarantee.

## **Access Workspace and KPI dashboards: insight into all aspects of your business**

Choose the hosting option that suits your business requirements. If you pick our Access Alto cloud-based hosting solution running VMware, you can rest assured your installation of Access Orchestrate will always be available with a 99.9% uptime SLA guarantee.

# Day-to-day scheduling, capacity planning, what-if analysis

## Production schedules and capacity management

Access Orchestrate lets your production planners and engineers perform at their best by reducing the amount of time they need to spend simply staying on top of a rapidly changing environment and allowing them to make faster decisions. Access Orchestrate lets them spend their time applying their wide-ranging knowledge and experience, not updating spreadsheets.

You benefit from day one. Access Orchestrate gives you a clear view of your production schedules, plans, activities and progress, and can be configured to suit your exact requirements. We can also integrate Access Orchestrate with back office systems to create end-to-end interaction.

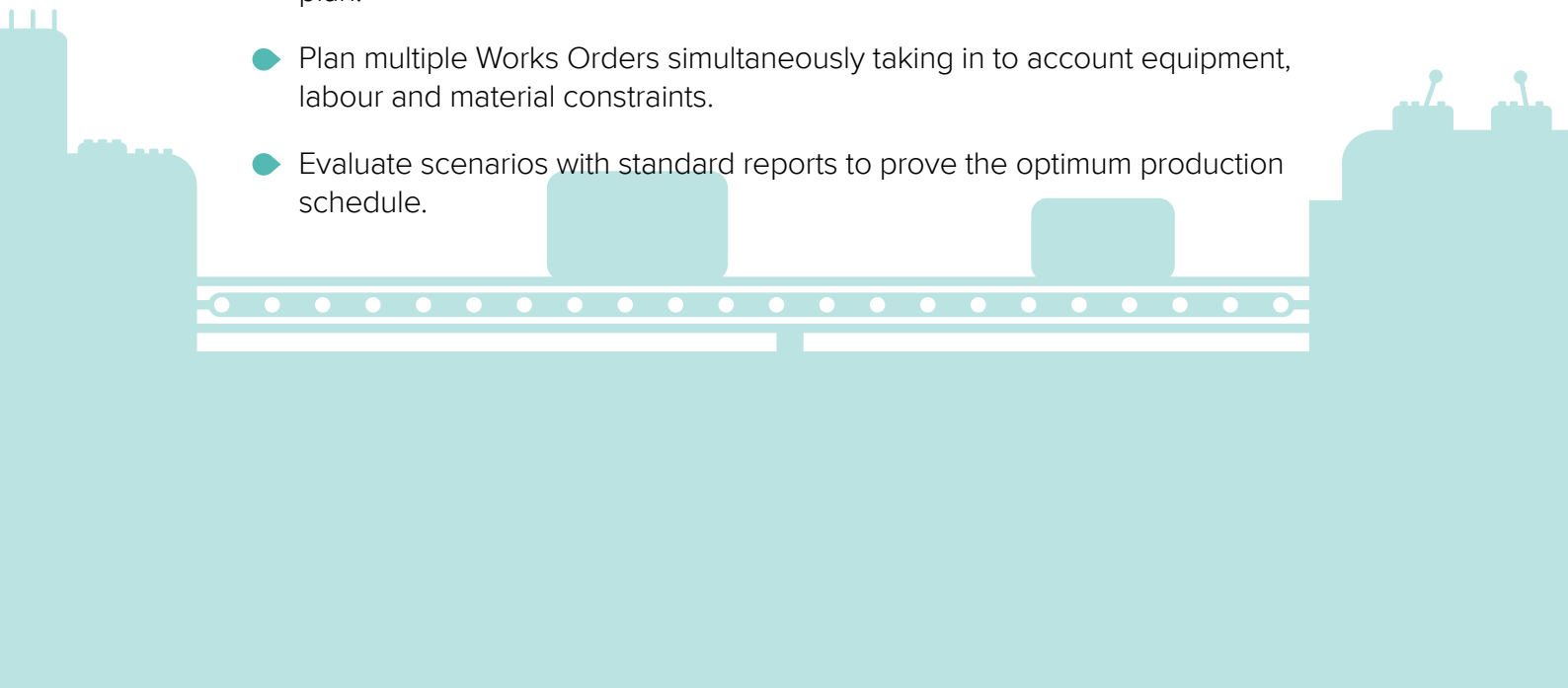
## Day-to-day scheduling with Drag and Drop Gantt Chart

- Simple 'drag and drop' functionality puts the planner in control.
- A clear picture of predicted bottlenecks plus accurate stock forecasting.
- Instantly adapt your plan using the Drag and Drop Gantt chart.
- Simple user defined 'work to' lists can be accessed throughout departments.
- Customise and filter the information displayed for each department or user.
- Alert your team with visual warnings and flags to prompt action on late orders or machine downtime.
- Add Works Orders to the Gantt Chart simply and quickly.
- Operators can start, stop and complete tasks within a user specific agenda.
- Improve communication between departments with one central production schedule.
- Reduce your batch footprint, with more accurate forward planning of each task.

## Capacity planning

- Proven modelling to determine your predicted factory capacity.
- Complete visibility of customer order lead times and promised dates.
- Easily view and understand available capacity.
- Evaluate the impact of change and the 'knock on' effect to customer service.
- Drive your planning using a mix of customer orders and forecasts.
- Reduced downtime between shifts for batch handover.
- Equipment and labour utilisation can be improved, with maintenance being accurately planned around the manufacturing batch.

## 'What-if' scenario planning

- Easy evaluation of alternative plans and outcomes.
  - Compare multiple options.
  - Make more informed decisions quickly.
  - Easily change orders and understand the repercussions on the rest of the plan.
  - Plan multiple Works Orders simultaneously taking in to account equipment, labour and material constraints.
  - Evaluate scenarios with standard reports to prove the optimum production schedule.
- 

# Improve your performance against KPIs

## Orchestrate does not replace production planners

It gives production planners and engineers the tools and platform they need to make faster and more efficient decisions without resorting to complex spreadsheets and paper-based systems for critical planning.

**Make full use of capacity:** use your resources to boost production (and profits) and eliminate the risk of missing a buffer or task, as every task is included within the Access Orchestrate process.

**Ultra-efficient scheduling:** use Access Orchestrate for critical path planning, automating planning outcomes that take into account all tasks and their dependencies (eg people, machines, tools and parts) in real-time. Crucially, you can still make adjustments and apply your extensive knowledge as needed.

**Just in Time (JIT) and lean manufacturing:** consistently meet JIT and lean principles and expectations with real-time information and instant control of your resources, labour and materials.

**Reduce stock holding:** get the balance exactly right so that you're comfortable everything is always on hand when it's needed.

**Greater management insight:** even when schedules are constantly changing, the wider business can still see the full picture in the form of comprehensive, easy to read, accurate management reports.

## Production KPIs

### On Time In Full (OTIF)

- Consistently achieve over 98% OTIF.
- Predict delivery dates with confidence with 'what-if' scenario planning.
- Prioritise orders to meet tight deadlines with more agile planning.
- Shorten lead times by reducing downtime between processes and synchronising multiple activities.
- Increase accuracy and improve delivery performance for customers with live data updates.

### Just in Time (JIT)

- JIT materials ordering avoids over-stocking.
- Balance your loads over multiple resources to smooth out production peaks and troughs.
- Create a lean operation by intelligently predicting correct stock levels and improve your cash flow.
- Real-time 'work to' lists show where production variances are occurring.

## Identify material availability and ability to meet purchase order requirements quickly

- Resource correctly for Work In Progress (WIP).
- Maximise internal capacity and reduce the need to sub-contract to external companies.
- Accurately forecast daily labour needs for scheduled orders and save on temporary staff costs.
- Improve workforce and machine utilisation by identifying skill shortages and training requirements.
- Plan Works Orders to be completed Just in Time and reduce WIP.
- Accurate scheduling and JIT production minimises inventory and improves cash flow.

# Full visibility with a single version of the truth

## Remote access

- Carry a portable production plan around on the shop floor on your tablet or mobile phone, accessing data from anywhere at any time.
- Book time and progress against the plan in real time using your mobile device.
- Analyse progress against the plan and gather data to drive continuous improvement.
- Communicate a clear and up-to-date plan with instructions to production operators.

## 360° visibility

- Intuitive graphs and the Drag & Drop Gantt Chart let your staff view orders and keep on track, wherever they are.
- Manage production effectively to maximise utilisation and efficiency.
- Easily make changes to your production schedule and see updates in real time with the Drag & Drop Gantt Chart.
- See who and what will be affected by taking on new orders.
- Improve collaboration and make more accurate forecasts for your internal and external suppliers.

## Ensure purchasing is aligned to production

- Review your manufacturing performance against the plan on multiple levels.
- Report on machine and labour utilisation and analyse real time progress against plan.
- Examine the scheduling and financial impact of multiple production plans using 'what if' scenarios.
- Create 'on time delivery' statistics and reports.
- Set up user defined alerts and notifications.
- Collate data from multiple sites or departments for a complete, graphical dashboard view.
- Add Access Dashboards for web-enabled business intelligence.



## Problem heatmaps

- ◆ Tasks on the Gantt Chart can be coloured by their 'lateness' creating a heatmap for areas of concern.
- ◆ Order 'lateness' can easily be measured for any given scenario.
- ◆ Evaluate utilisation of machine and labour resources.

## Integration and data import

- ◆ Deploy as a stand-alone system or **ERP** integrated solution.
- ◆ Integrate with legacy **ERP** or other applications to avoid data duplication, disconnected information and human error.
- ◆ Easily link production planning with your manufacturing execution systems.
- ◆ A standard integration template using APIs to connect your systems.
- ◆ Interface with existing applications such as Microsoft Access, Excel and other stand-alone databases.
- ◆ Data connections to **Access SupplyChain ERP** and **Access FactoryMaster MRP** available as standard.
- ◆ Import data from any other system using Odbc, OleDb or SQL Server data connections.



# Orchestrate delivers more than simple project management

Access Orchestrate is easy to use and a major part of its simplicity is the **Drag and Drop Gantt Chart**; a component also found in simple project management tools such as Microsoft Project.

But that's where the comparison ends. Access Orchestrate is a fully functional **production planning and scheduling system** that delivers far more than a project management tool.

## The batch footprint

Access Orchestrate shows how batches mesh together, allowing you to solve scheduling problems by seeing more than a single batch.

## Alternative routes

Access Orchestrate can manage alternative routes that are not necessary for project management and therefore not offered in less sophisticated management tools.

## Manage multiple products in the same facility

A vital ability if you need to process different products with a different batch footprint and alternative routes.

## Schedule multiple resources at the same time

Simple project management tools will tell you how many hours are needed for each resource, but that's not enough for production scheduling. Access Orchestrator tells you what resources are needed for each task and shows you clearly when you need them, avoiding schedule conflicts.

## Include the Bill of Materials

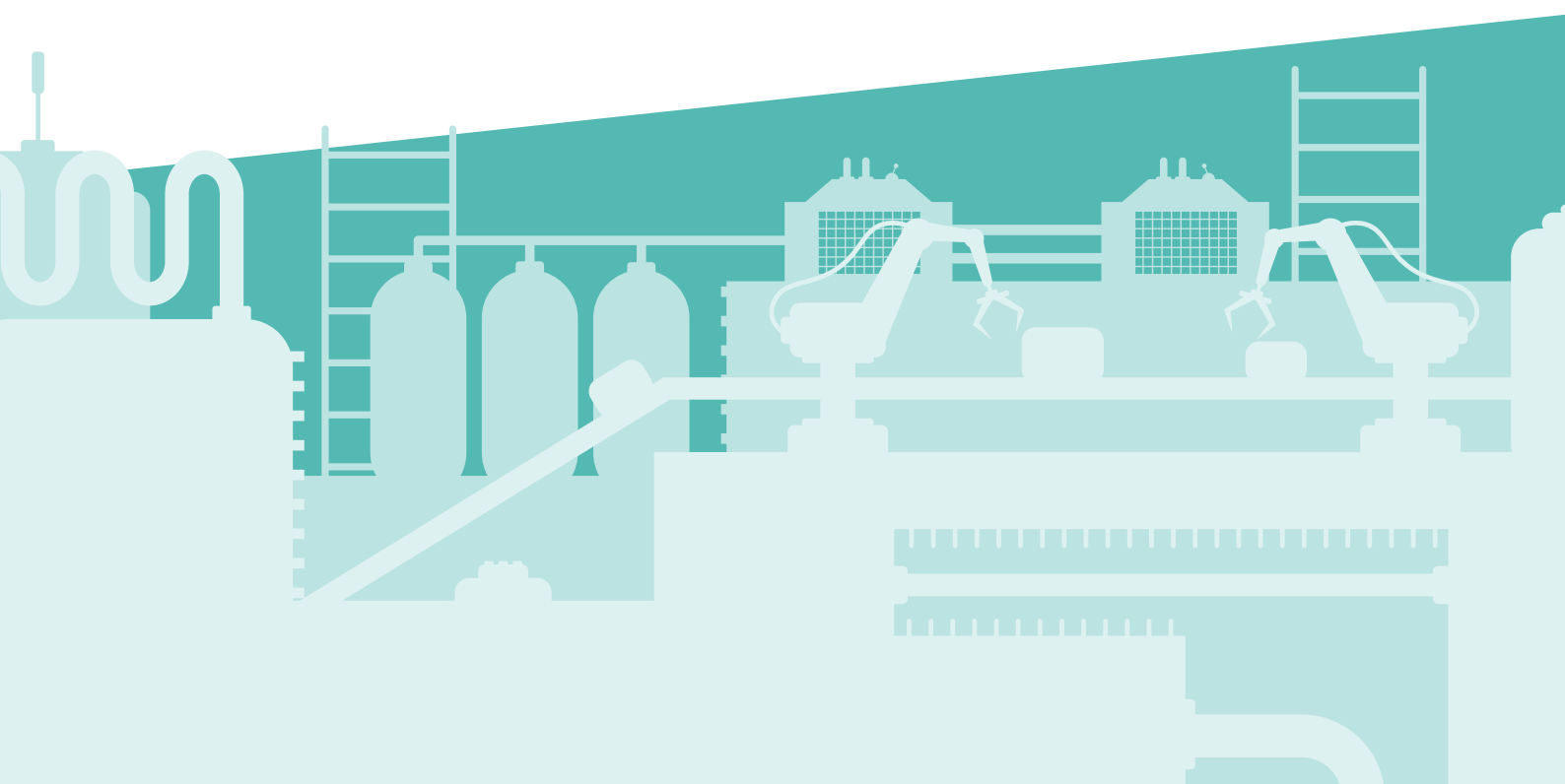
Take a Bill of Materials for each product, either by reading it in from an existing ERP system or by entering it directly into the Access Orchestrator menus.

## User specific views and real-time updates

By defining views that are user specific, Access Orchestrator can highlight different areas of the plan to different people.

Link Access Orchestrator to execution software such as Delta V or update Orchestrator's task status manually.

Both options allow you to set up views that automatically keep pace with real-time events, highlighting tasks that have been started, are in progress or have been completed.



# Why **Access Orchestrate** makes sense for your business

With so many features and functionality built into the Access Orchestrate system, it's easy to get distracted by the detail and miss the bigger picture.

**But it's important to remember that this system will make your manufacturing operations more visible, more efficient and more productive. That's good for your customers and it's good for your bottom line too.**

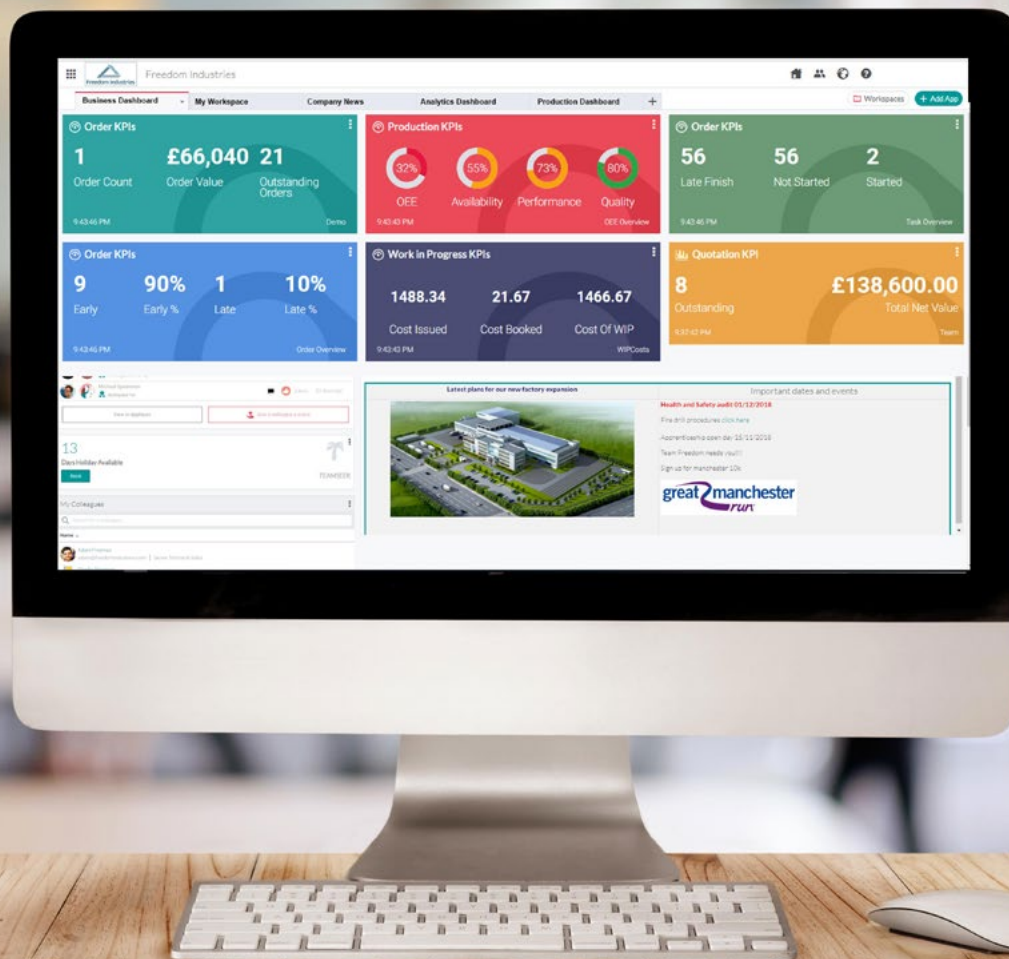
**Why not contact us today and arrange for a free demonstration. Once you've seen Access Orchestrate in action, it's so much easier to see the possibilities for your manufacturing operations.**



0845 345 3300



[theaccessgroup.com/orchestrate](https://theaccessgroup.com/orchestrate)



**KPI dashboards** give you insight to all aspects of your business

**Integration** with financials

Access Orchestrate is now brought together through Access Workspace, which transforms the way you access information throughout your business, giving you real-time insight and analytics on a single platform. Join up your whole business - finance, manufacturing, purchasing, costing and warehousing software – in easy to use, flexible dashboards.

**Access Orchestrate** integrates with recognised legacy accounting and ERP software. But why not consider upgrading to **Access Financials** or **ERP** and take advantage of its increased functionality and scalability for when you expand?

## Choosing Access opens up a host of other business opportunities

One of the key benefits of working with Access is that we are not simply focused on developing stand-alone solutions. We apply our specialist knowledge across the supply chain as well as offering market leading software for core business areas such as Finance, HR and Payroll. If you already have systems in place, then we are happy to work with you to integrate our solutions with those you have from providers.

However, if you are keen to rationalise your IT and, importantly, your outside support and the problem solving that is required when functions draw from disparate areas, then it's good to know that there is another way. Access systems can be integrated with other Access software for smoother operations across your business. Talk to us about what that could mean for your business.

## We promise to be there if you need us

Our software is developed, deployed and supported in the UK, where we have been based for over 25 years. Which means that you'll be partnering with us, and you can talk to our people directly whenever you need to. You'll never be fobbed off with a remote call centre somewhere else in the world – and that's a promise.

### About The Access Group:

The Access Group has been recognised in The Sunday Times Tech Track 100 in 2019 and is a leading provider of business software to mid-sized UK organisations. It helps more than 20,000 customers across commercial and not-for-profit sectors become more productive and efficient. Its innovative Access Workspace cloud platform transforms the way business software is used, giving every employee the freedom to do more.

Established in 1991, The Access Group, with an enterprise valuation of over £1billion, employs more than 2,000 staff.



01206 322575



[www.theaccessgroup.com/construction-management](http://www.theaccessgroup.com/construction-management)



[conquest-sales@theaccessgroup.com](mailto:conquest-sales@theaccessgroup.com)